



STANDARD AIR CON QUOTE 2025

Prices valid until end of summer 2026

Ph : +61420 718827

STANDARD SUPPLY AND INSTALL SINGLE STORY HOME:

New Split system air conditioner includes :

- Wall Bracket
- Electrical connection (QLD Electrician License number 171 009)
- Removal and disposal of old unit
- Commissioning
- GST
- Everything For a single-story home.



MITSUBISHI HEAVY INDUSTRY PREMIUM

MIDEA APOLLO BUDGET

MHI AVANTI and MHI BRONTE			MIDEA APOLLO		
2.0kw	SRK20ZSA-W/DXK06ZSAW	\$1950		All have inbuilt Wi-Fi	
2.5 kw	SRK25ZSA-W/ DXK09ZSAW	\$2050	2.6kw	MFAB26HNNA	\$1500
3.5 kw	SRK35ZSA-W/DXK12ZSAW	\$2300	3.5kw	MFAB35HNNA	\$1700
5.0 kw	SRK50ZSA-W/DXK18ZSAW	\$2700	5.0kw	MFAB50HNNA	\$2300
7.1 kw	SRK71ZRA-W/DXK24ZSAW	\$3200	7.0kw	MFAB70HNNA	\$2600
8.0 kw	SRK80ZRA-W/DXK28ZSAW	\$3650	9.0kw	MFAB90HNNA (9KW)	\$3000

Please note : This years standard MHI come with WIFI built in. All of these models have WIFI with the possible exception of Avanti plus. Best check with MHIAA for exact specs on those below left

MHI AVANTI Plus Energy efficient (no Wi-Fi)			MHI CIARO (Avanti with WIFI)		
2.0kw	SRC 20 ZSxA / DXK 06 ZSx A	\$2100	2.0kw	DXK 07 ZTLA	\$1900
2.5 kw	SRC 25 ZSxA / DXK 09 ZSx A	\$2200	2.5kw	DXK 09 ZTLA	\$2000
3.5 kw	SRC 35 ZSxA / DXK 12 ZSx A	\$2450	3.3kw	DXK 12 ZTLA	\$2200
5.0 kw	SRC 50 ZSxA / DXK 18 ZSx A	\$2850	5.0kw	DXK 18 ZTLA	\$2600
6.0kw	SRC 60 ZSxA / DXK 21 ZSx A	\$3350	7.1kw	DXK 24 ZTLA	\$3100

PLEASE SEE INSTALL DIAGRAM NEXT PAGE

Install must be an A or B type. (80% of all jobs are A or B and the price is exactly what you see here)
Upstairs add \$150. If install is a C or D, there will be extra charges as listed on the diagram. Even the most Difficult job our extra rarely won't exceed 500, but we will always quote before we start.

No surprise extra costs. We don't surprise you if you don't surprise us with obstacles.
Unit is running when we leave. There is no more to pay.

AIR CONDITIONING EXPERT

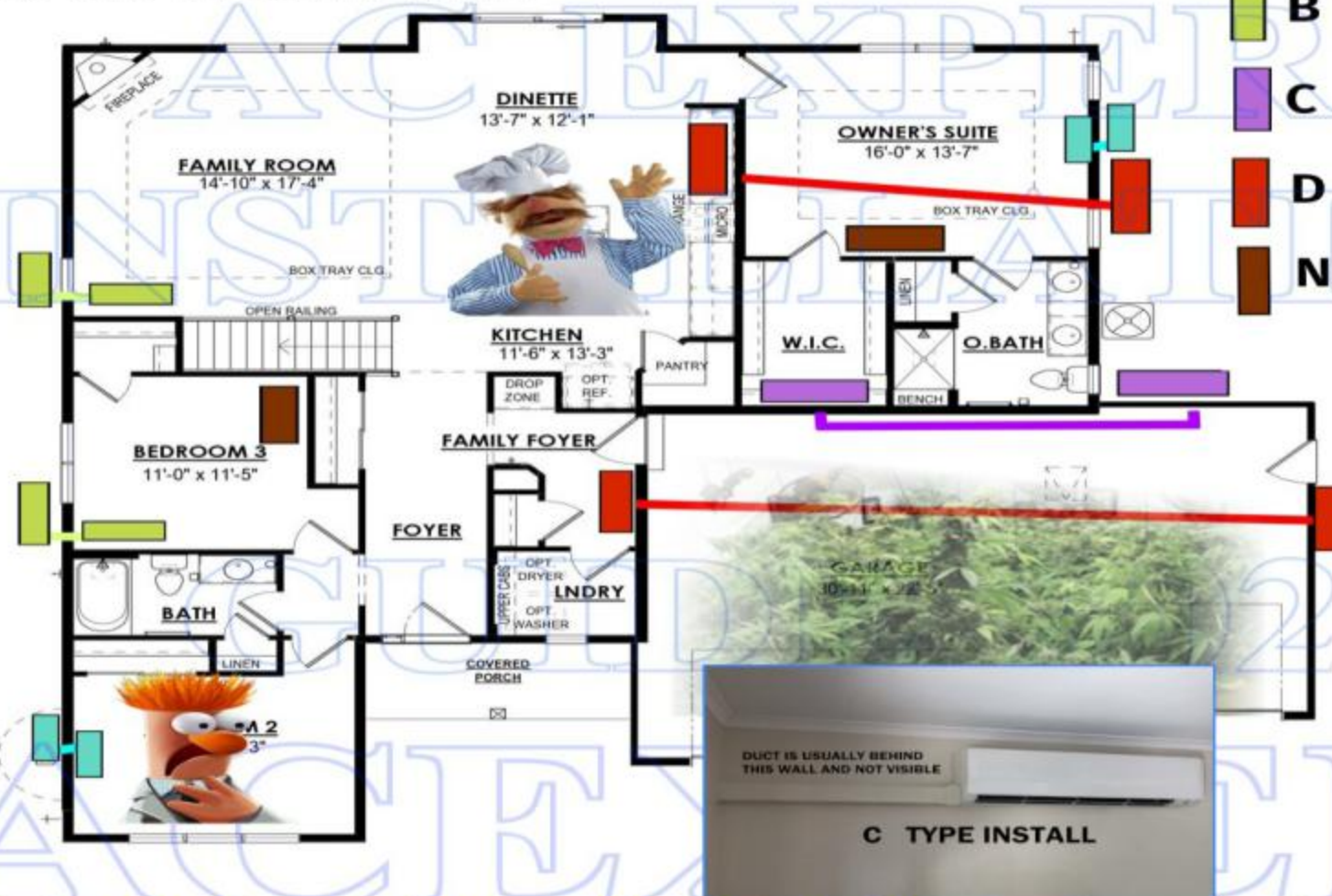
INSTALLATION DIAGRAM BELOW.

A AND B ARE COVERED COMPLETELY BY QUOTED PRICE ABOVE.

C AND D ARE EXTRA AS MARKED (Upstairs is now \$150)

SPLIT SYSTEM PLACEMENT

GUIDE TO WHERE YOUR SPLIT SYSTEM
CAN BE INSTALLED



- A TYPE INSTALL
- B TYPE INSTALL
- C TYPE INSTALL
- D TYPE INSTALL
- NO WAY NO HOW



A and B type installs = standard price.

C type install add \$150

Upstairs + \$150

D type install add \$250 - \$500

ALL PRICES ARE LISTED AS MAXIMUM
IF YOU HAVE AN EASY C THEN ITS NO
EXTRA. IF YOUR D HAS GOOD TILES
EASY TO LIFT THEN CLOSER TO 200

IF YOUR D IS SECOND FLOOR TIN ROOF
AND 35+ DEGREES IN DECEMBER
WE'RE PLUMBERS YOU HAVE THE
WRONG NUMBER SORRY

This may look confusing but A and B are back-to-back and side entry on an external wall. Nearly every install is an A or a B. Most companies charge extra for B, all of our competitors charge extra for a wall bracket so you're already in front because all that is standard for us. C is not much extra but D is the hardest kind of install and we will probably only do 5 all summer from 500 jobs so I wouldn't worry too much about extra charges. If it is we will always tell you before we start.

If work commences, the price is fixed it can't go up.



IF YOU BOUGHT YOUR AIR CONDITIONER ELSEWHERE – WE WILL STILL INSTALL IT

The prices below are install only. You must already have the split system at your home. Do not add these prices to the ones above this is a separate issue. We do not pick up from Harvey Norman.
We do not install second hand units.

INSTALL ONLY PRICES Inc GST

SINGLE STORY

Up to 4kw (A or B)	\$750
Up to 6kw (A or B)	\$800
Up to 9kw (A or B)	\$900
C Install	\$150 extra
D Install	\$200 - \$500 extra

UPSTAIRS

Up to 4 kw (A or B)	\$ 900
Up to 6kw (A or B)	\$ 950
Up to 9kw (A or B)	\$1050
C Install	\$150 Extra
D Install	Second Mortgage

PLEASE CHECK YOU HAVE ENOUGH WALL SPACE INSIDE

MEASUREMENTS MITSUBISHI AVANTI: 2.5 – 5KW

INDOOR UNIT DIMENSIONS

880mm wide 350mm high

MEASUREMENT MITSUBISHI BRONTE: 7.1 – 8.0KW

INDOOR UNIT DIMENSIONS

1200mm wide 360mm high



MIDEA INDOOR UNIT DIMENSIONS – SLIGHTLY SMALLER THAN Mitsubishi

2.5kw = 805mm	5kw = 1080mm	9kw = 1260mm
3.5kw = 805mm	7kw = 1260mm	Height on all Midea = 350mm +

EXTRA EXTRA CHARGES ONLY APPLY IN THE FOLLOWING CIRCUMSTANCES :

1. If you tell us your pronouns at any time during the quote / install or phone call we charge double
2. If you complain about our pronouns surcharge its triple + double
3. Don't like our pricing structure? Please contact some pronoun having installer and see how that works out for you.
4. If you live further than Currumbin, Northlakes or Amberley Airbase then a whoop whoop fee applies. But it's far less than the pronoun fee. Maybe \$100 per installer who must travel to whoop whoop to install. Nothing personal, but those places add two hours to our day.



EXAMPLES OF OUR INSTALLS



We are able to install within a week from your order. **If you have a baby or are elderly** or some bizarre emergency, we might be able to shuffle stuff around to get you in faster. Possibly.

Hope that covers all your questions. If not feel free to give us a call during business hours.

Business hours are 7am to 6pm Monday to Saturday. Unless you're family*

*In which case business hours are 1-2pm Tuesday

Thank you, regards
Simon Hickey

AcExpert
+61420 718827
acexpert@fastmail.com
airconditioningexpert.com.au

